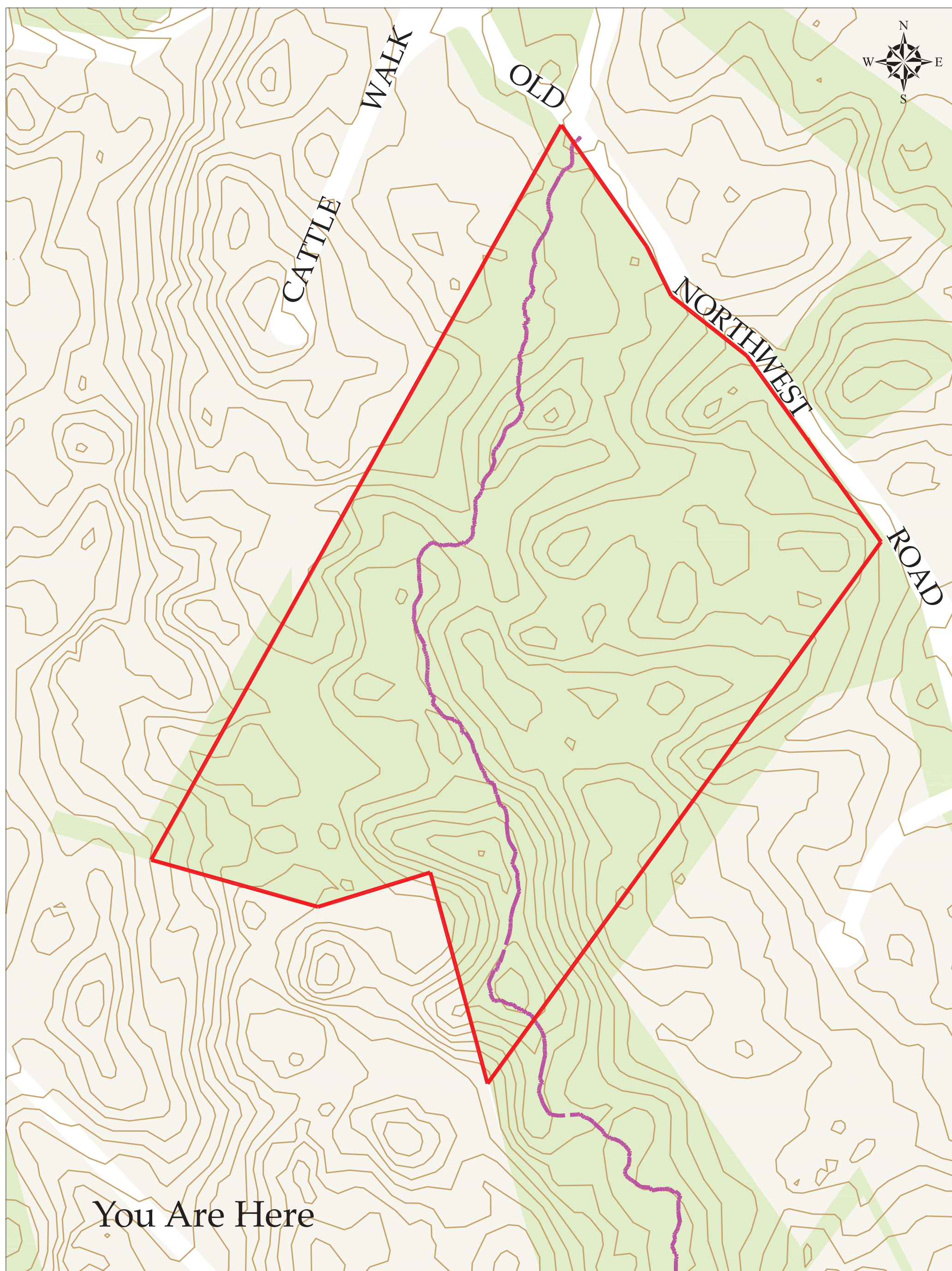




Wilson's Grove Preserve

In June 2002, Marillyn B. Wilson donated a conservation easement to the Trust on a 22.7-acre parcel of woodland in the Northwest Woods section of East Hampton, which extinguished all 6 development rights. Trails traverse the property and the easement allows for pedestrian (non-motorized) use of the trails by the public. The site contains a locally rare woodland comprised of majestic white pine and oak. Subsequently, in February 2008, Ms. Wilson donated a total of 45.7 acres to the Trust, including the 22.7-acre, easement-protected parcel. The resulting Preserve includes Ms. Wilson's architecturally distinctive home and woodland gardens.



Enjoy:

- walking pets on leashes
- birdwatching, photography
- plant identification, nature study

Please No:

- hunting, camping, fires
- motorized vehicles or horses
- removal of plants, littering

Keep your eyes open for the following species, all of whom may be spotted here at Wilson's Grove Preserve!



Downy Woodpecker



Black-capped Chickadee



Tufted Titmouse



Fowler's Toad